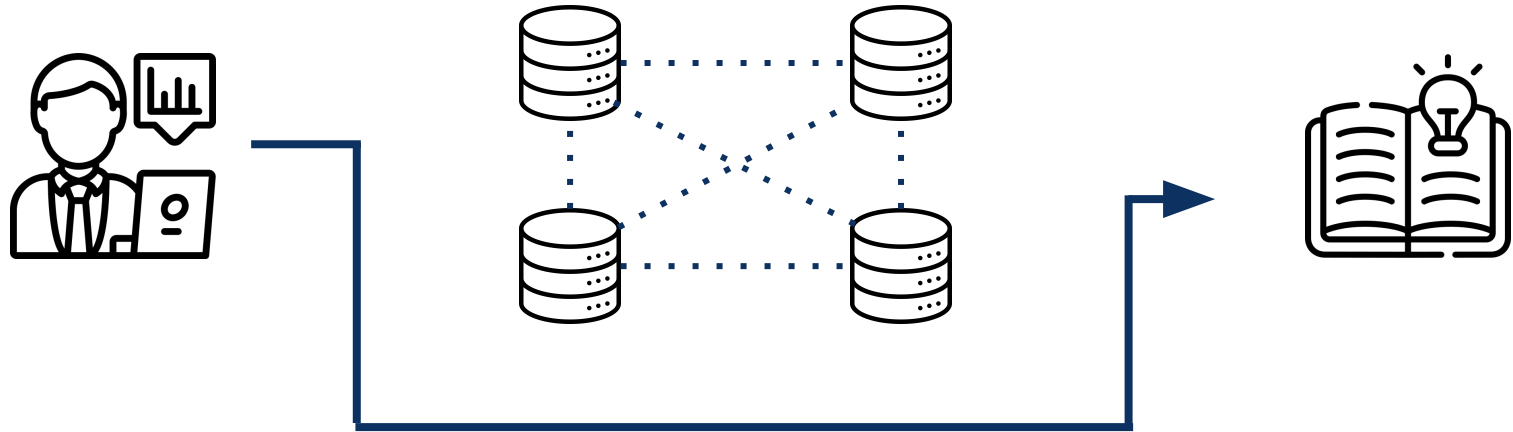


Hewlett Packard Enterprise Data Recommender

The background features a stylized, light blue graphic of an open book. The pages are represented by horizontal lines, and a large, five-pointed star is positioned above the book, with radiating lines extending from its base. The entire graphic is set against a dark blue background.

Xavier Yin, Abdullah Farqaleet, Keira Jiang, Zi Qian Chang, Kai Schuster, Pranav Ramakrishnan

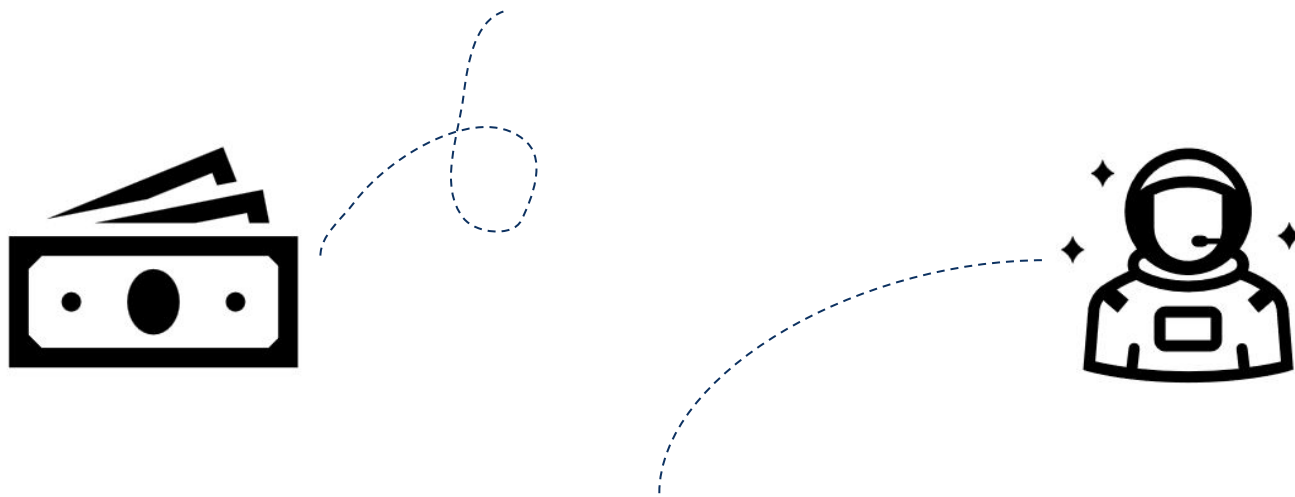
Institutional data is siloed and disconnected, rendering companies unable to derive full value from their data assets



Knowledge workers bypass rich data systems for known sources of information

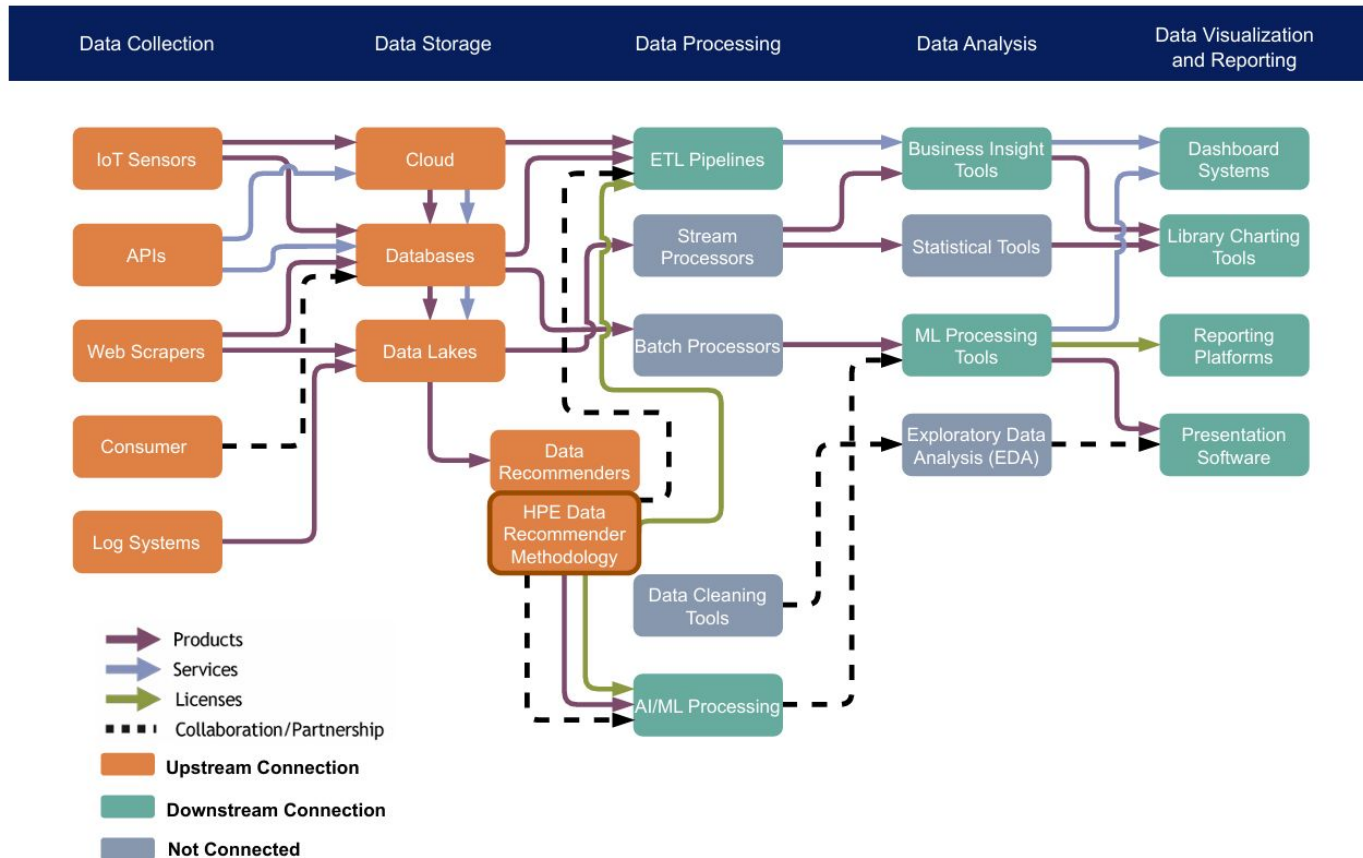
HPE's novel data recommender methodology is the solution

Identify **valuable internal data sets**



Find **unexplored, implicit connections**
between data sets

The value chain for this technology is highly interconnected

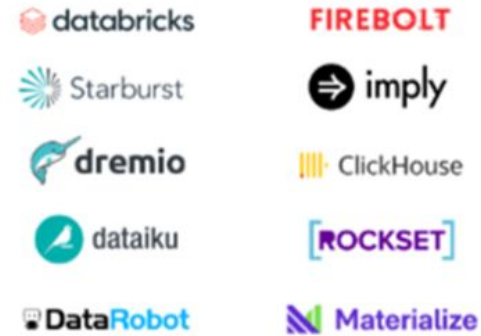


The data management landscape is crowded with service providers

Tech Competitors

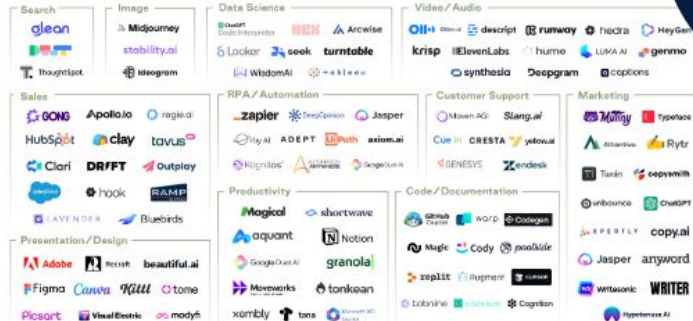


Recommender Competitors- Query & Processing



**HPE
GreenLake +
HPE
Recommender**

Recommender Competitors- AI Apps



Green Lake Competitors



We narrowed our focus into three industries

Key filters based on our research
and interviews:

01 Generate and depend on **vast volumes of historical data**

02 Require **collaborations across different fields and departments**

03 Heavily regulated and must adhere to **strict data privacy, security, and governance standards**



Financial Service

Healthcare

Legal Services

Tremendous expected growth in these areas

Healthcare
Analytics
Market

14.6B

North American
Market in 2022

21.1%

Expected Global
CARG in next 10
years

3.4B

North American
Market in 2022

11.5%

Expected Global
CARG in next 10
years

Financial
Analytics
Market

10.75B

North American
Market in 2023

9.1%

Expected Global
CARG in next 10
years

Legal Technology Market