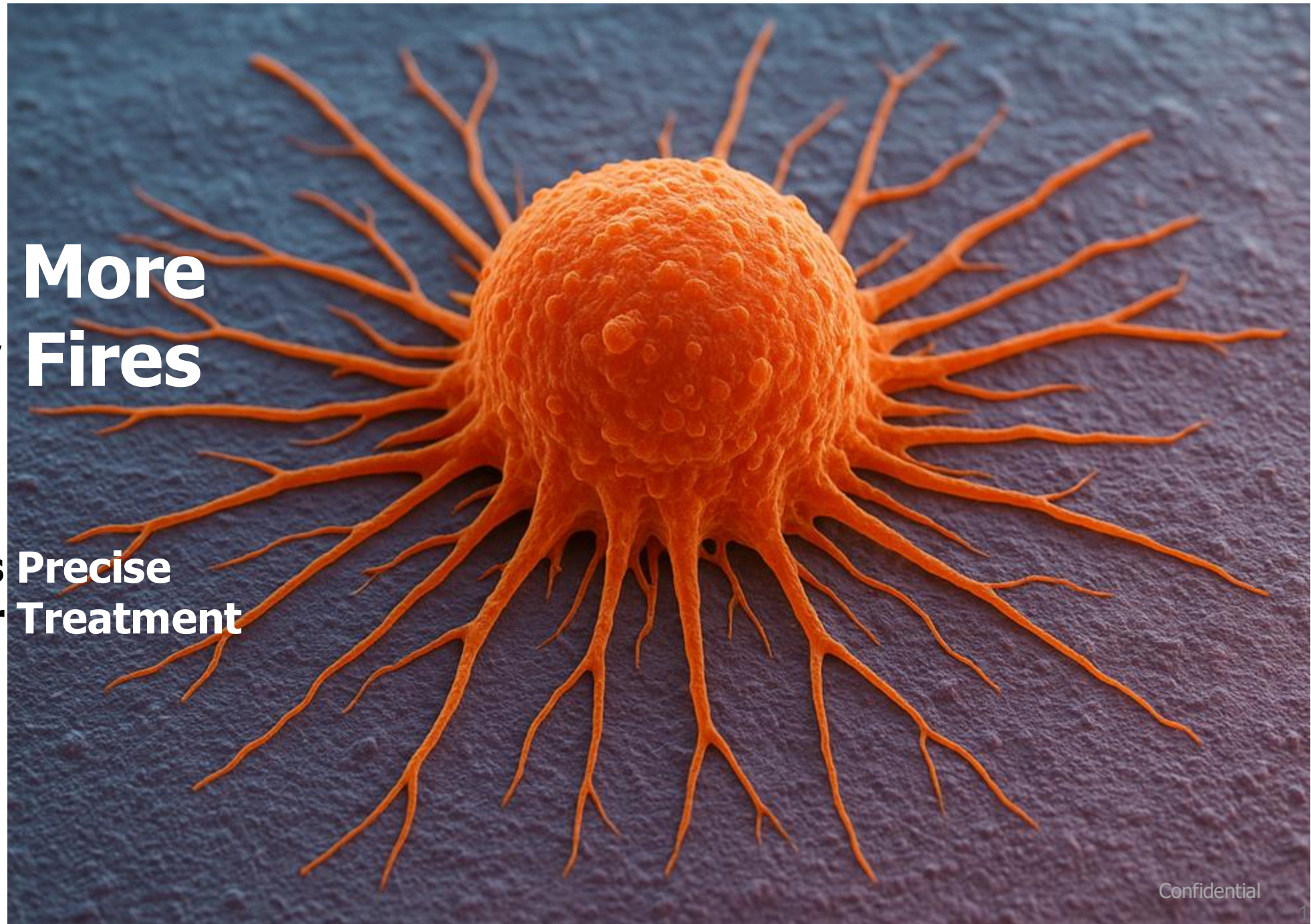


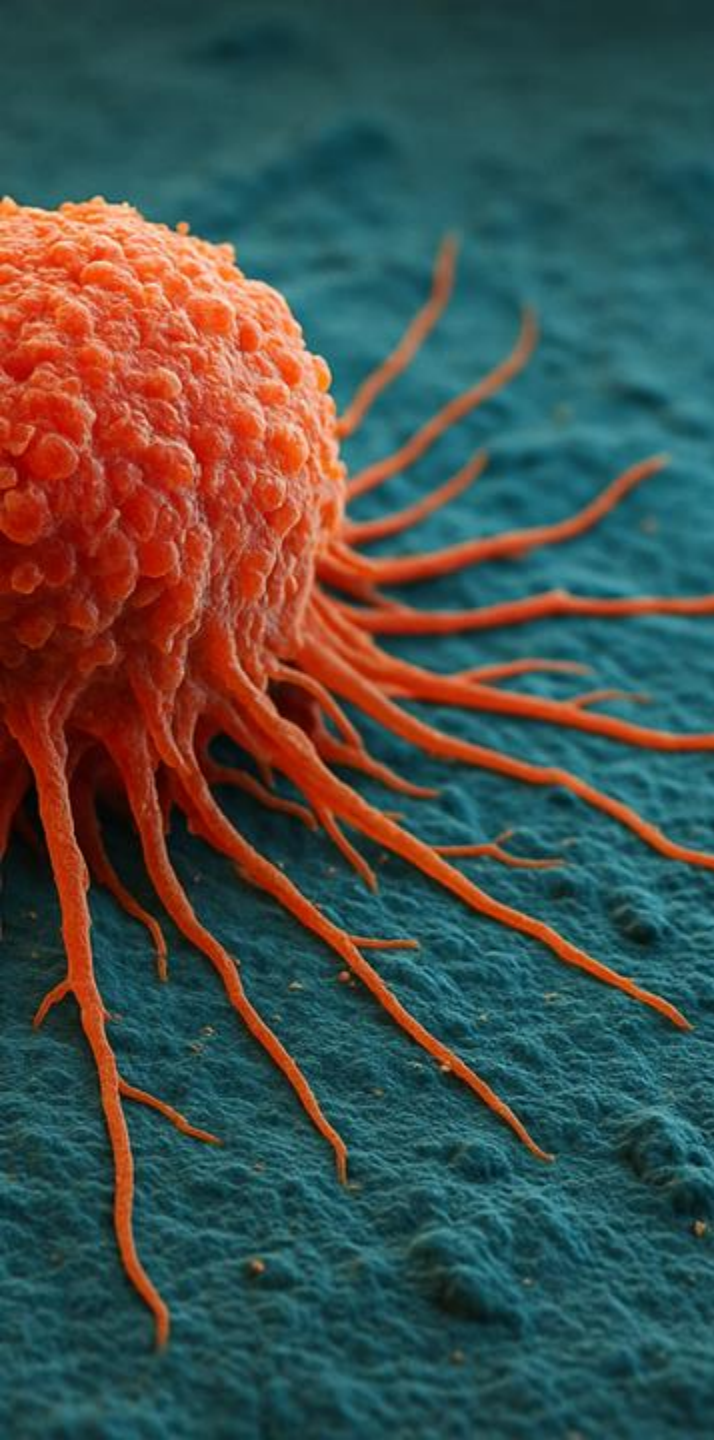
No More Friendly Fires

KuriBio's Precise Blood Cancer Treatment

Jimmy Mawdsley, Mikin Patel,
Sangeeta Koilada, Shereen Aissi,
Shreeyash Mittal

Deep Tech Innovation &
Entrepreneurship
April 2025

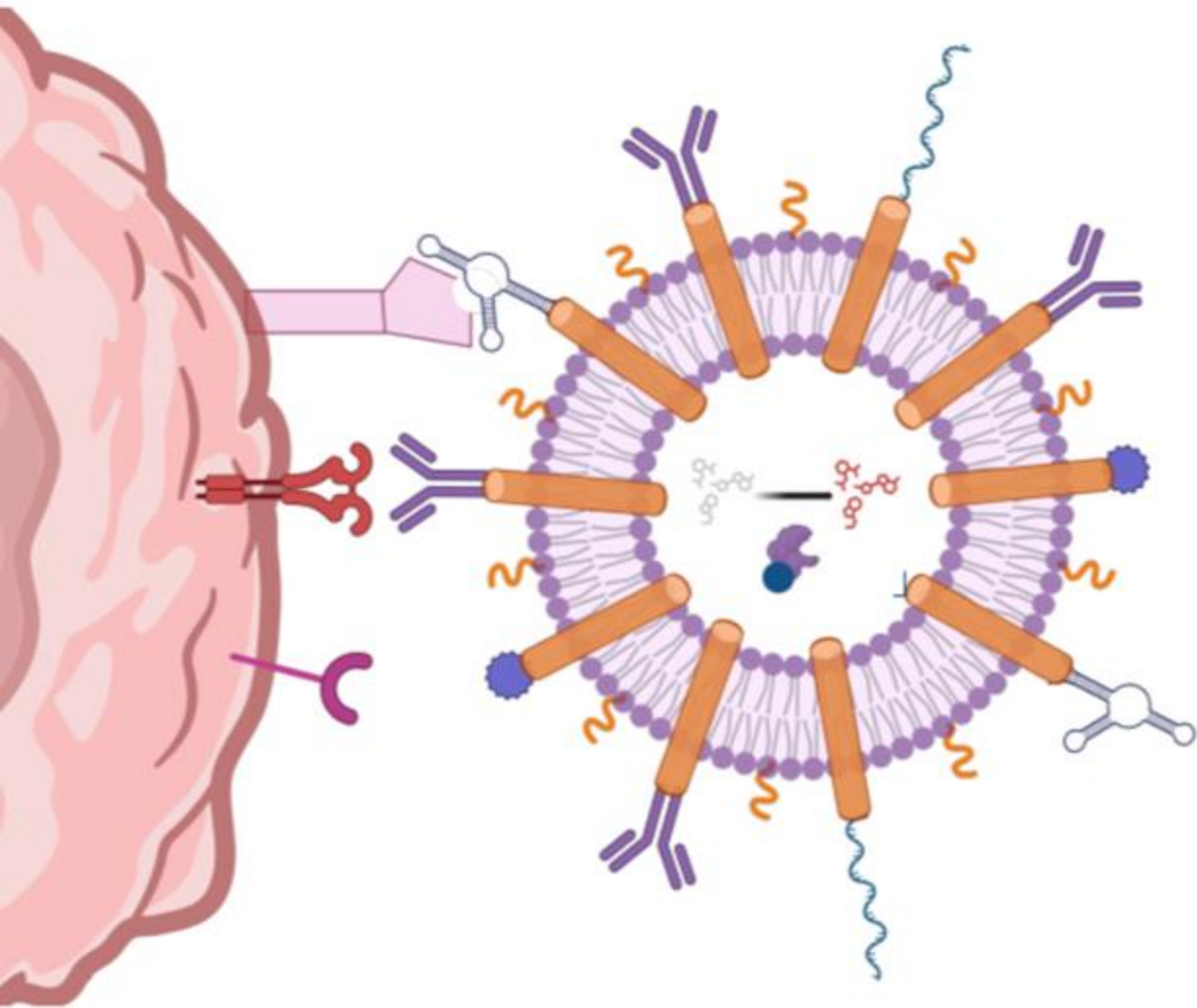




Problems With Current Treatments

- Every three minutes, someone in the U.S. is diagnosed with blood cancer
- Traditional blood cancer treatments lack precision, eliminating both cancerous and healthy cells
- Existing therapies (chemotherapy, CAR-T cells, and ADCs) typically focus on targeting a single biomarker, limiting their precision.

The Treatment Should Not Be Worse Than The Disease: KuriBio



KuriBio's Targeted Drug Delivery System Leverages Multiple Biomarkers to Precisely Identify Cancer Cells

NANOPARTICLES

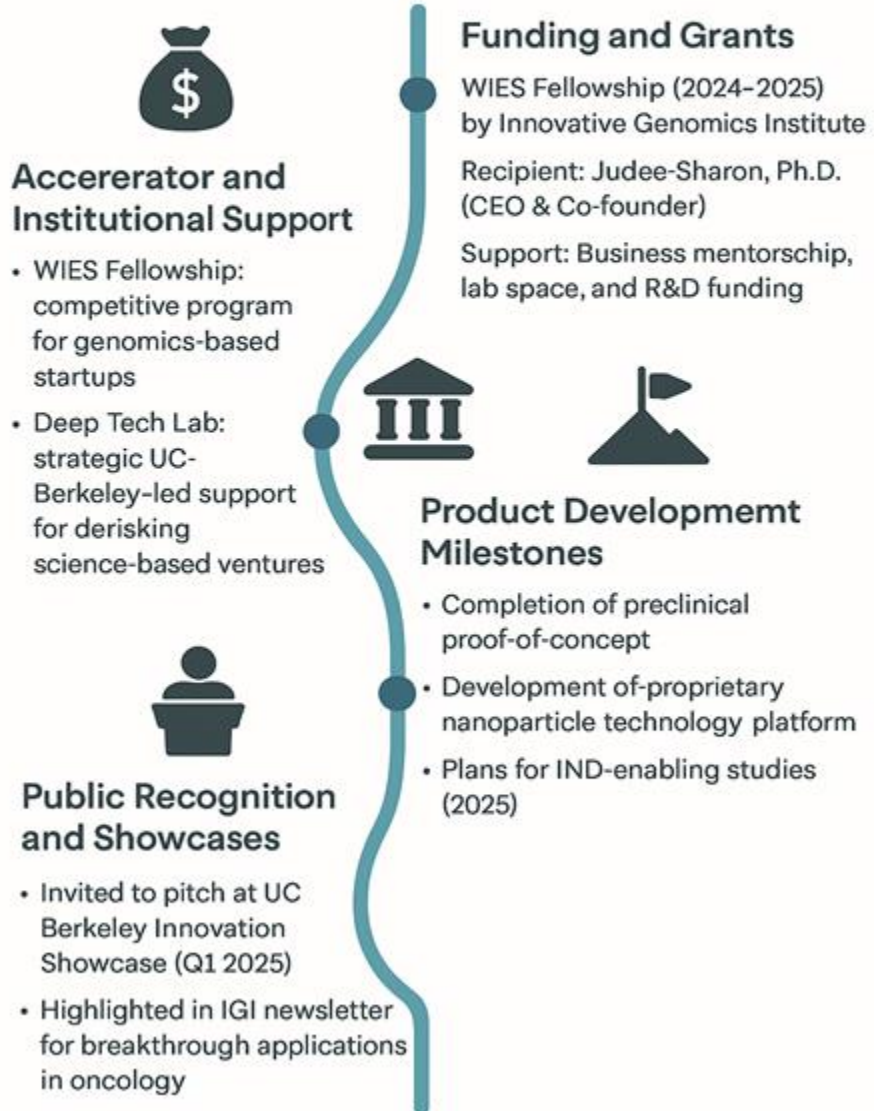
Embedded with multiple unique receptors that attach specifically to cancer cells

CHIMERIC ANTIGEN RECEPTORS

Serve as the transmembrane binding protein

ENCAPSULATED CELL-FREE EXPRESSION SYSTEMS

Ensures safety to patient's healthy cells when nanoparticle binding is incomplete



KuriBio's Current Status

De-risked Early-Stage Investment:

Currently has non-dilutive funding from IGI and UC Berkeley's Deep Tech Lab.

Validated Platform with Clinical Trajectory:

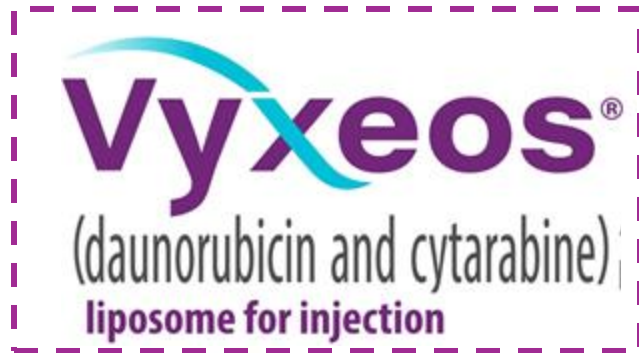
Founded proof-of-concept in-vitro studies keeps Kuribio on track for IND-enabling studies in 2025.

Strong Market Signal:

Multiple pitch opportunities, increasing investor and industry interest in its oncology breakthrough.

Competing Alternatives

tend to be developed by smaller pharmaceutical companies prior to M&A's, but only lymphoma drugs emphasize targeting efficacy for specific demographics



LIPOSOMAL-BASED COMBINATION CHEMOTHERAPY
AML Treatment

Can Only Treat Niche AML Subset
NOT TARGETED
Limited to Chemotherapy Agents

ANTIBODY-DRUG CONJUGATE
AML Treatment

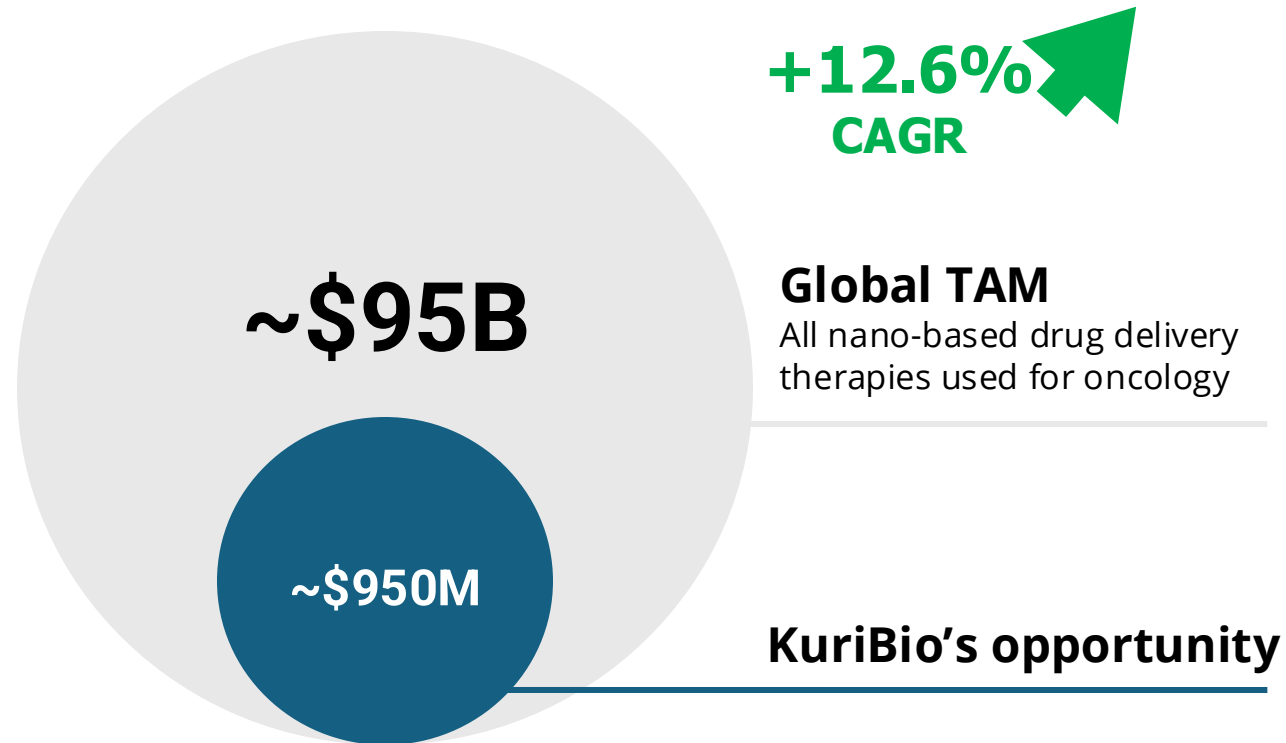


Wyeth



ANTIBODY-DRUG CONJUGATE
Lymphoma Treatment

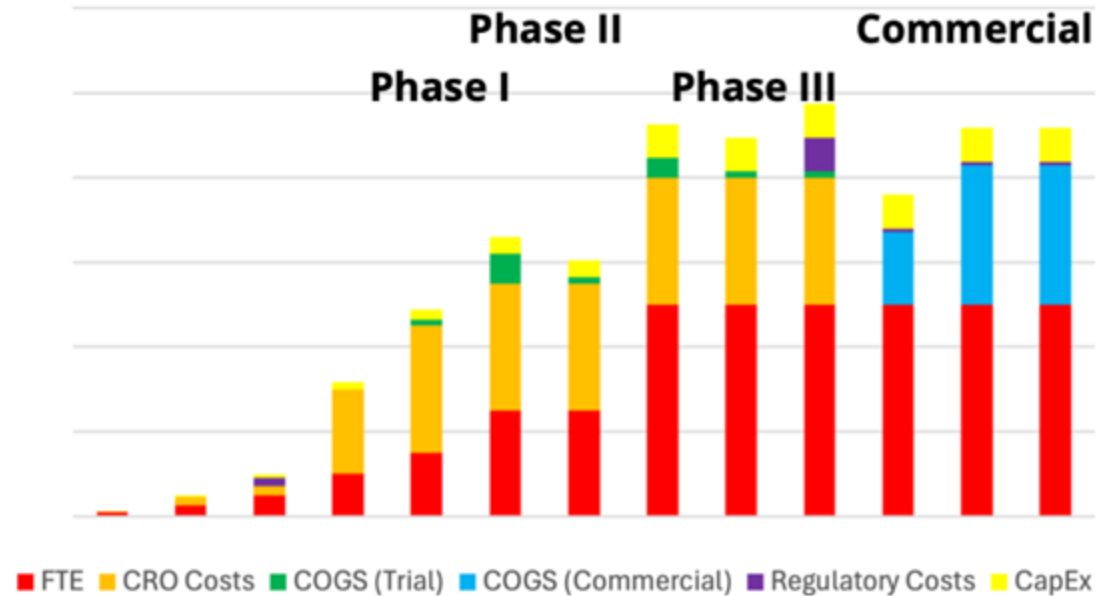
The nanoparticle-based cancer therapy market is growing rapidly



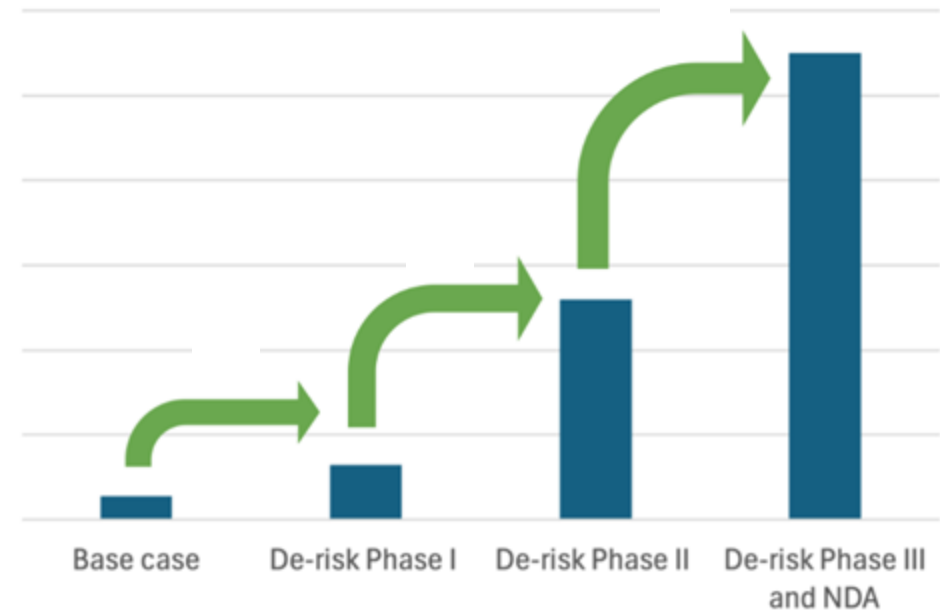
There is potential for large returns

but KuriBio needs capital to cross the chasm
and partnerships to de-risk development

Costs vs. Phase of Development

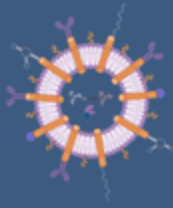


Valuation vs. De-Risking



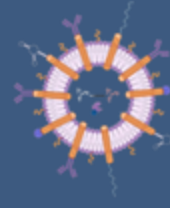
KuriBio's Road Ahead

Sharing is Caring: Licensing to Global Leaders



To collaborate and license KuriBio's novel packaging to global pharmaceutical companies

Going All In: Big Pharma Partnership & Acquisition



To partner with a Big Pharma to develop the treatment and get acquired

